

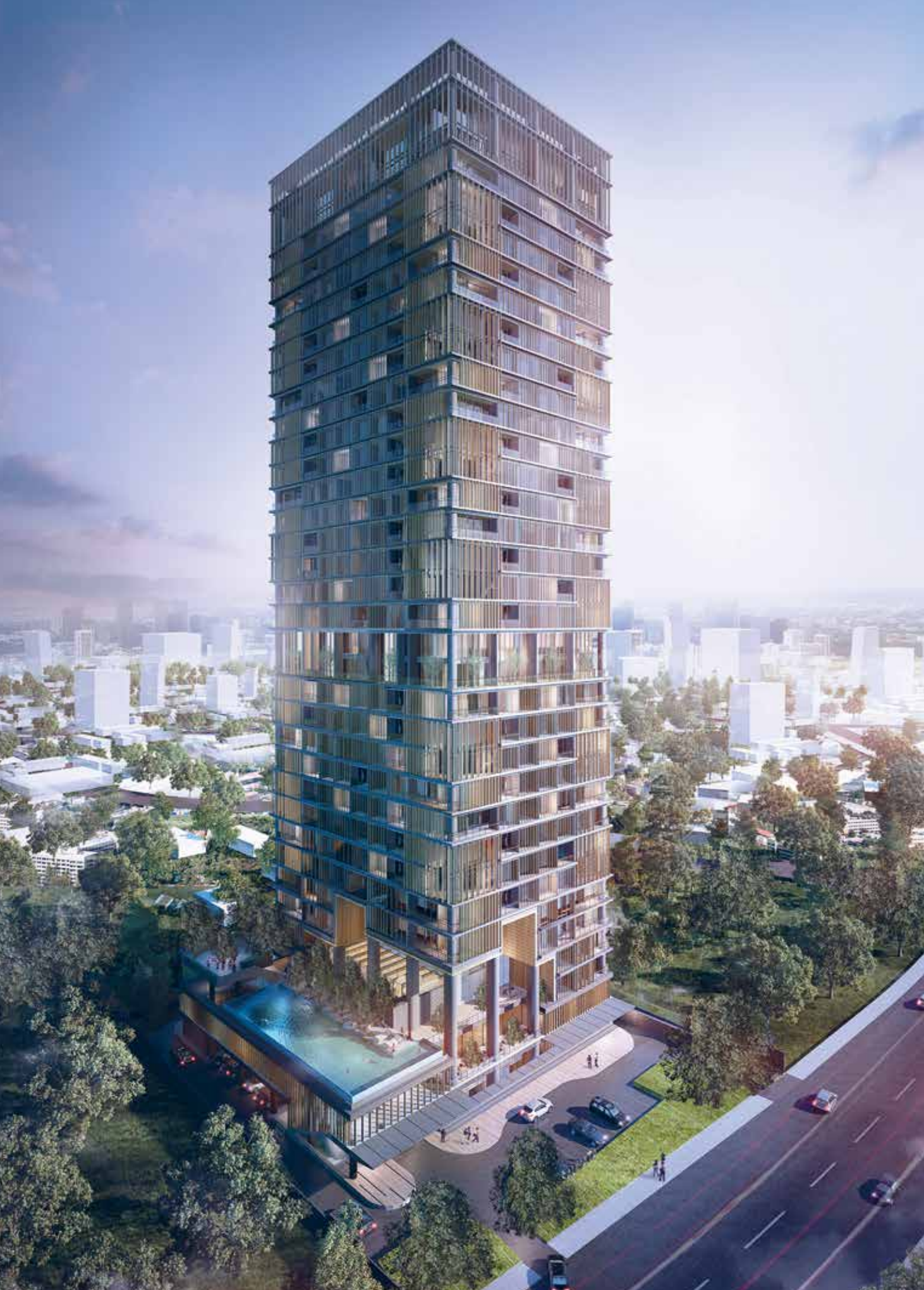


SAUMATA

There is one golden key of all keys,
which will guide you to discover the true meaning of home.

A home surrounded by Alam Sutera's EXCLUSIVITY.
Designed by Aboday, architecture's BRILLIANCE.
Packed with 203 units of COMFORT.
Connected by toll roads direct ACCESS.
Surrounded by educational academies' EXCELLENCE.
Enriched with contemporary amenities to fulfill your LIFESTYLE.

Here is the only golden key you will need,
to unlock the ESSENCE of home.
SAUMATA is where the GOLD glitters even brighter.



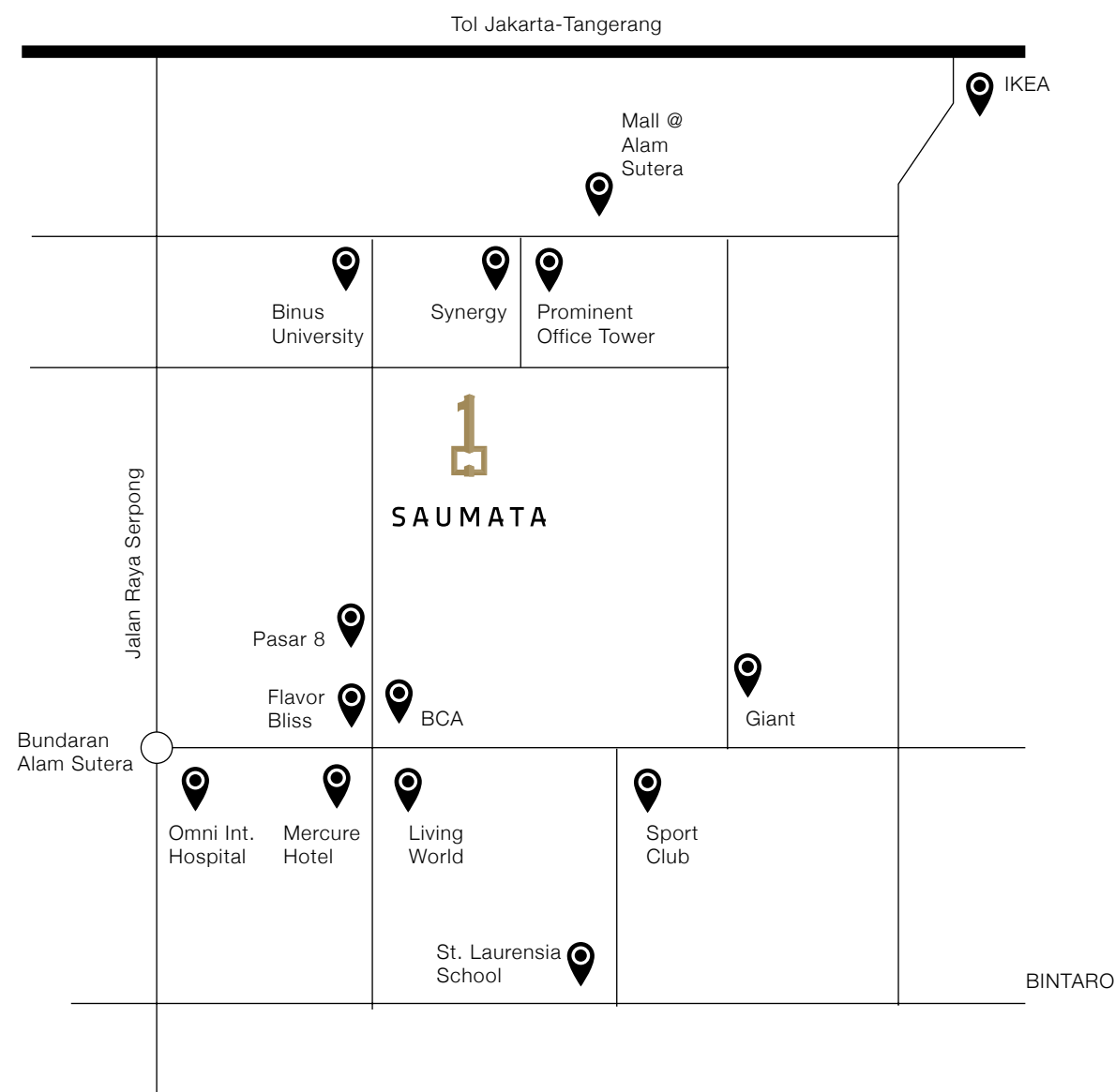
SAUMATA stood proudly to capture the essence of exclusive living. Built from a grand concept of disciplinary architecture, SAUMATA's development process formed a 4-sided interlock system to divide the units and create an extraordinary design. Private lift of all units complete your personal potrait of effortless luxury.

WHERE TREASURE
MEETS PLEASURE.

ALAM
SUTERA'S
UNHIDDEN
GOLD.



Welcome to the first and only condominium in Alam Sutera, Serpong, a different environment where simplicity and modernity blend flawlessly. Here, SAUMATA's role is perfected with lively surrounding, dining places, educational academies, shopping places, hospital, convention center, office tower, and other essential needs. It is not only a place to live, it is a place to be stylish.



PERFECTION
IS NEVER
A DREAM.

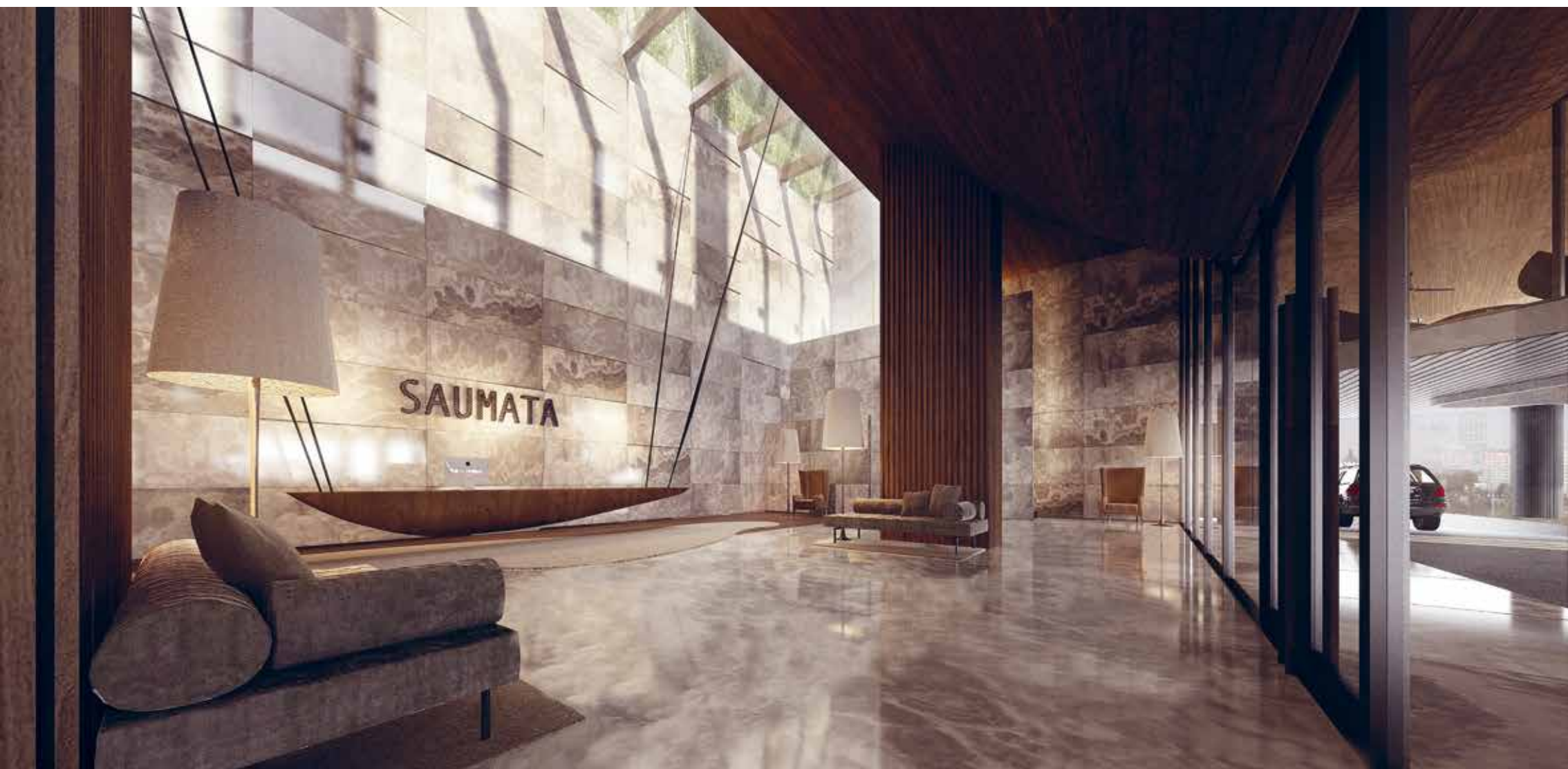








Magnificent lobby area, warmest
greeting to your arrival. It is all integrated as
a sneak peek of SAUMATA's overall wonder.
An excitement to make you feel at home.







SAUMATA is surrounded with magnificent landscape, added by a signature infinite swimming pool. A perfect escape after work, refreshing time leisure satisfaction.

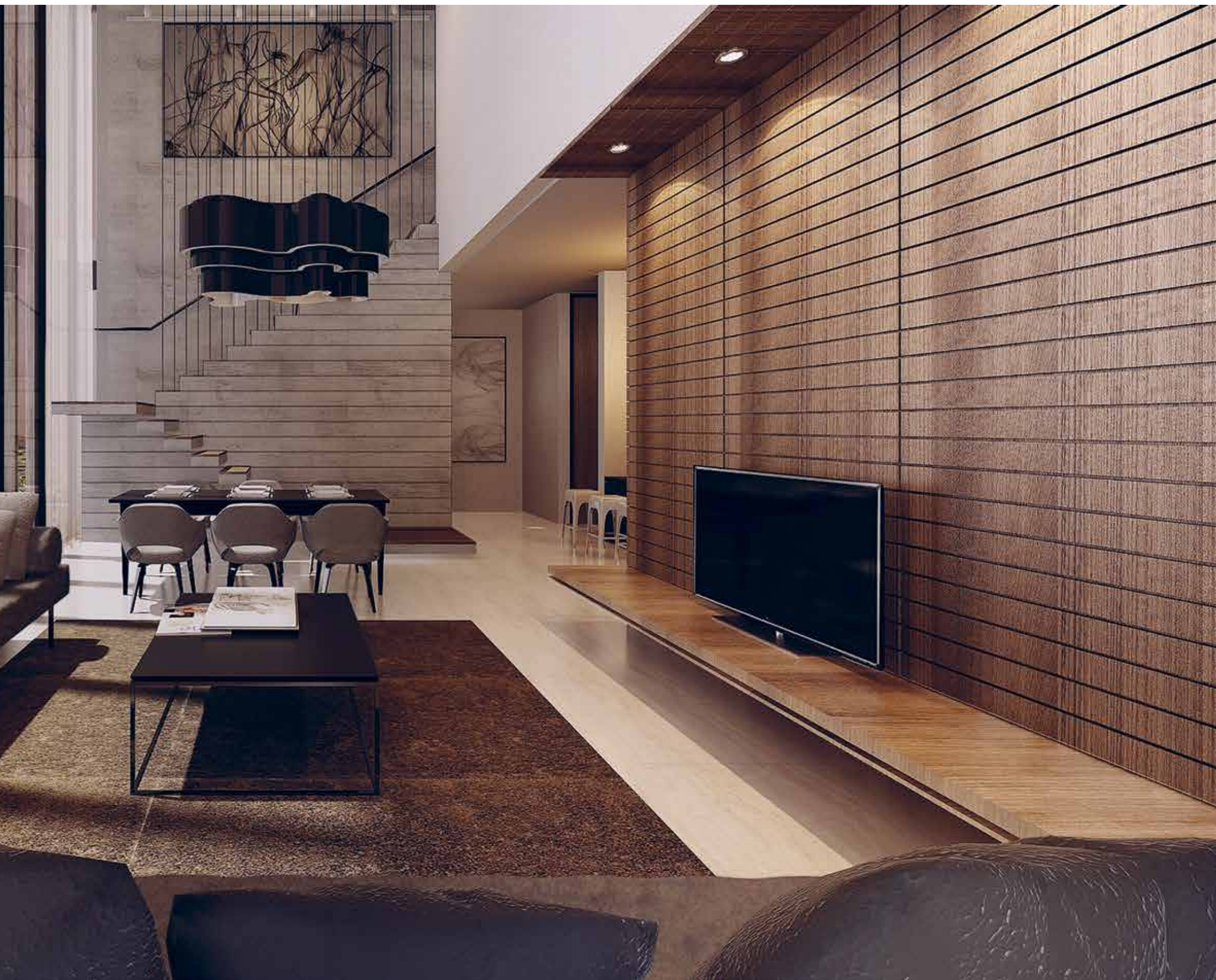
SAUMATA's promises a perfect lifestyle with its full recreational facilities, compliment with commercials such as restaurant, cafe and complete gym, this could conclude your day-to-day life to express your personality, lifestyle and taste.

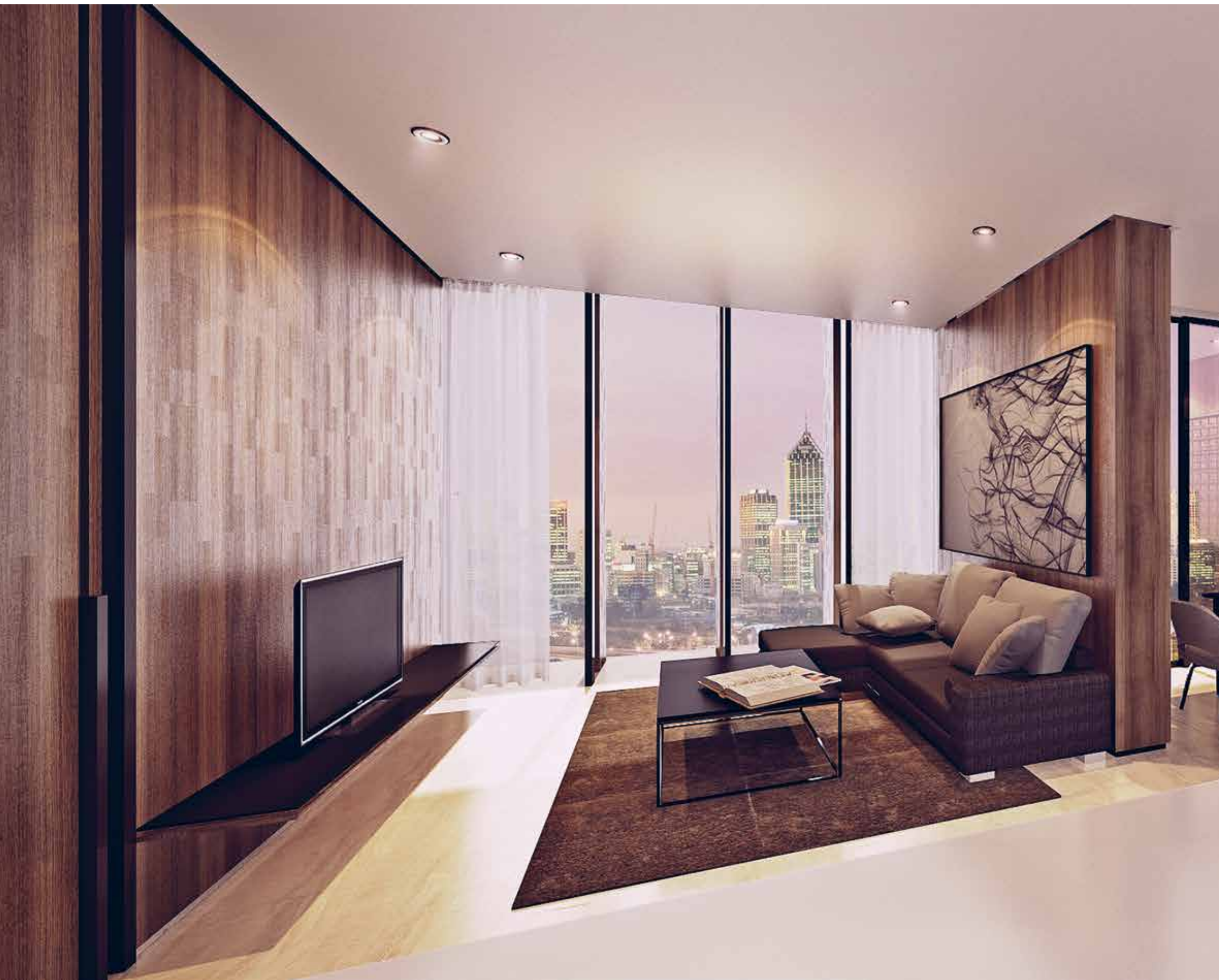




DOUBLE
VOLUME
LOFT WILL
LET YOU
LIVE IN
COMFORT.







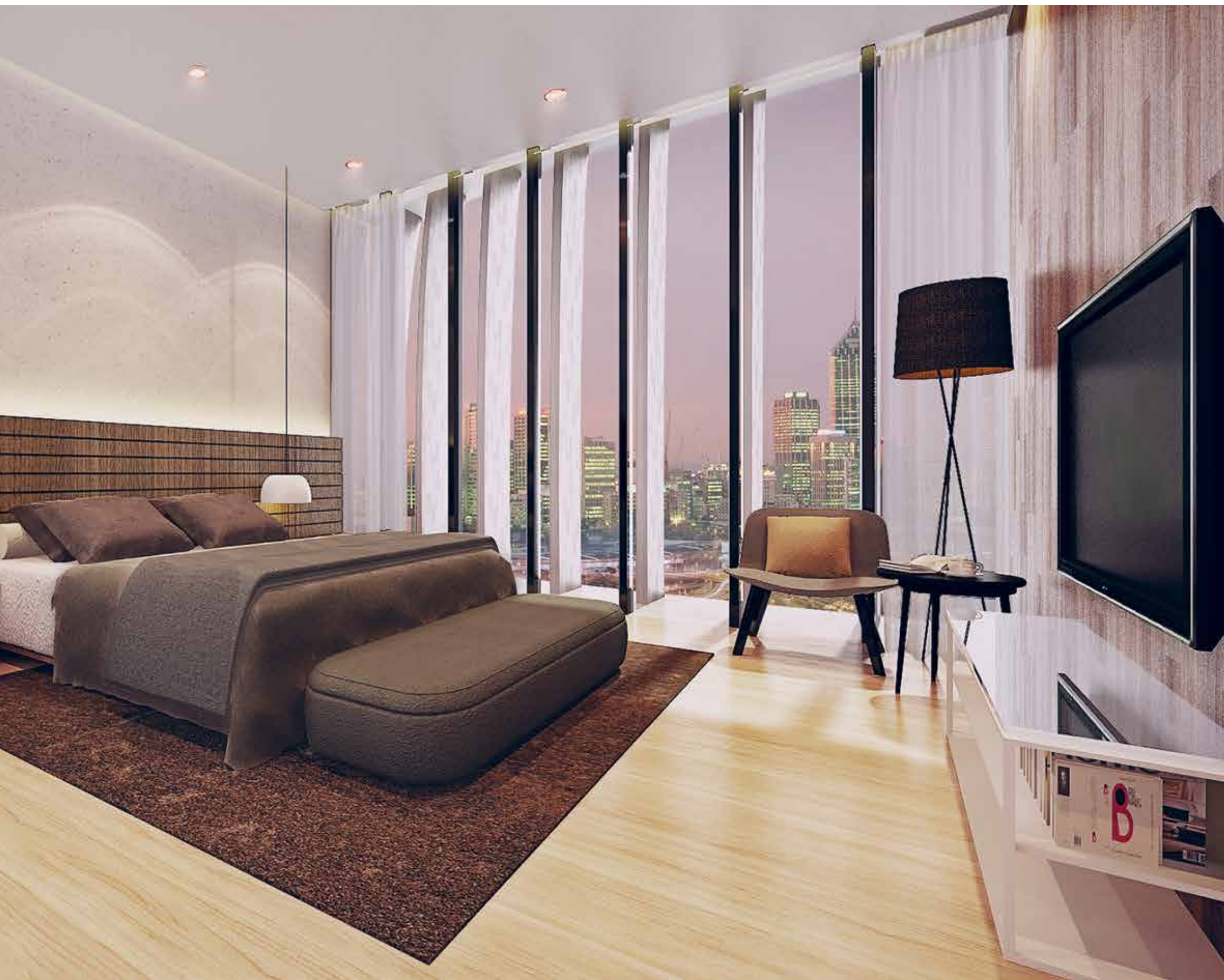


Efficiency of space with high ceiling
and more spacious area of living,
dining, and pantry.
Picture an ideal life in serenity.

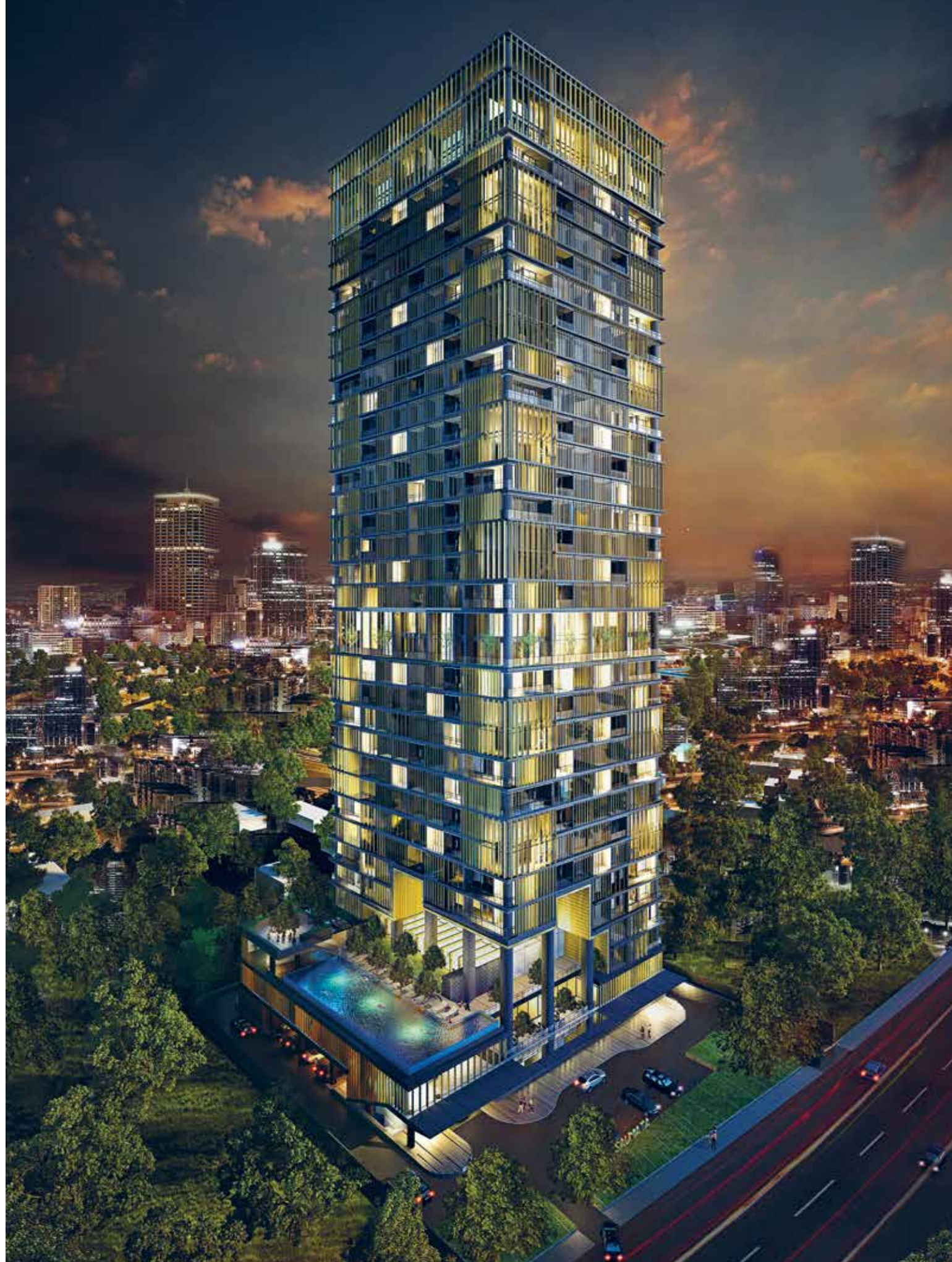
START A DAY
WITH MAGIC,
END IT
WITH BEAUTY.

Morning and night never felt
this enchanting.





SAUMATA IS FOR THOSE
WHO PREFER THE IDEAL
WAY OF LIVING.
THE GOLDEN KEY IS
NOW YOURS.



BLOCK PLAN



JL. ALAM UTAMA





JL. ALAM UTAMA



type

2BR A

124 m² semi gross



type
2BR B
128 m² semi gross



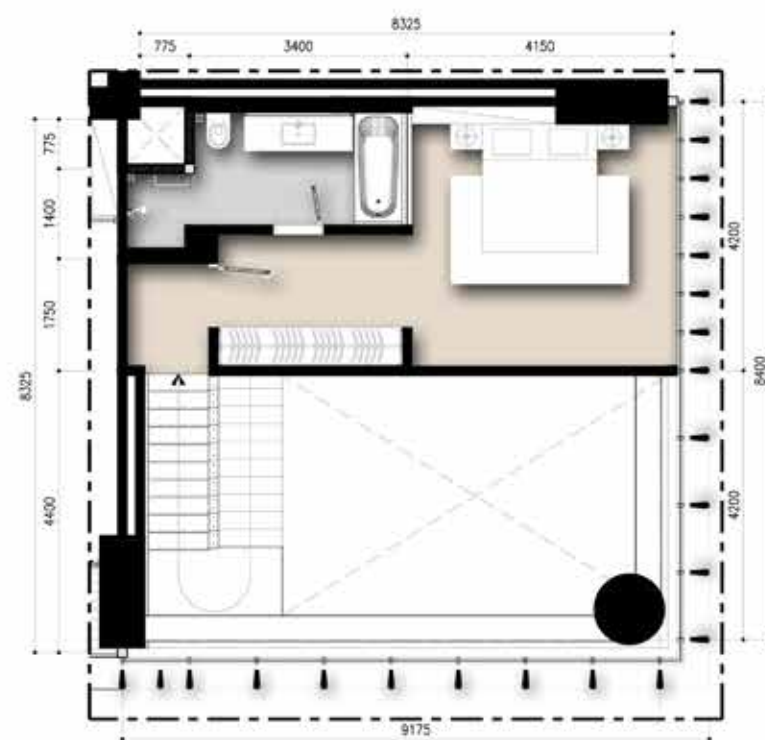
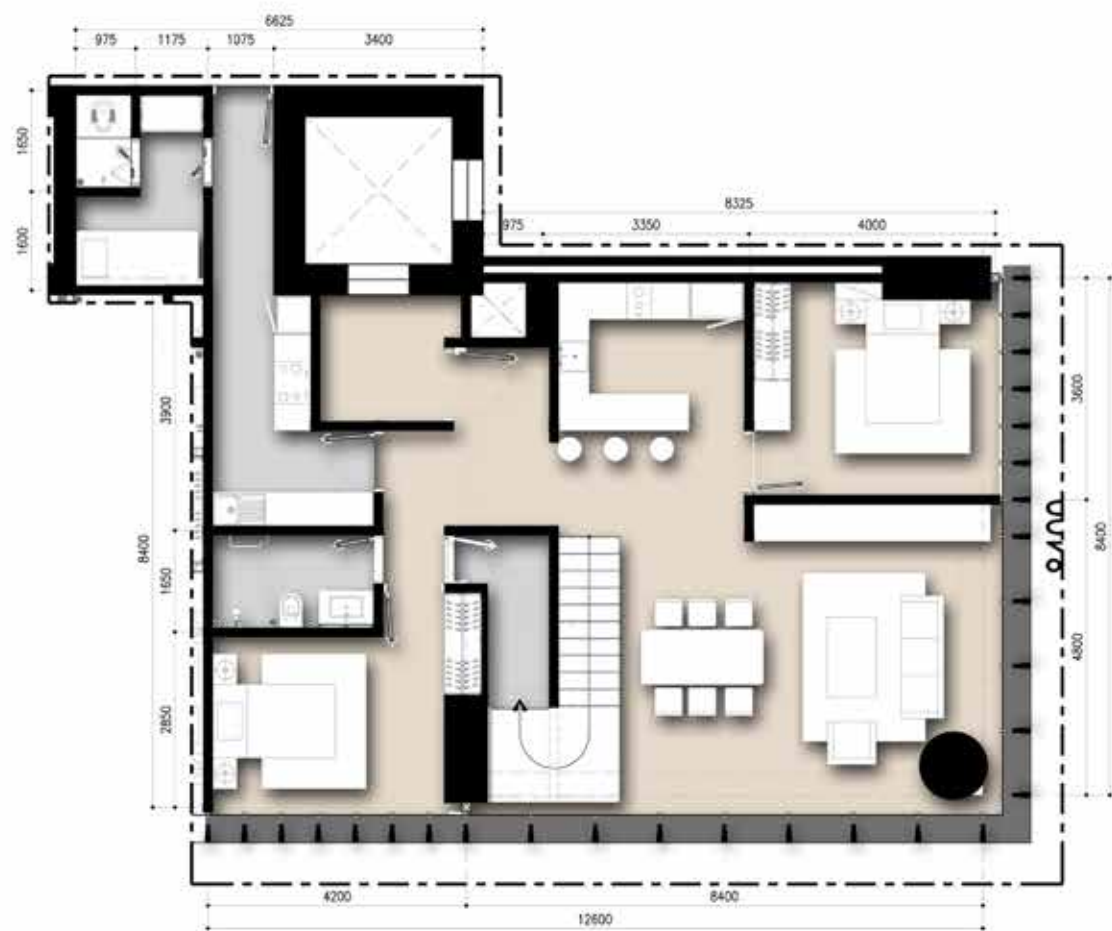
type
3BR A
159 m² semi gross



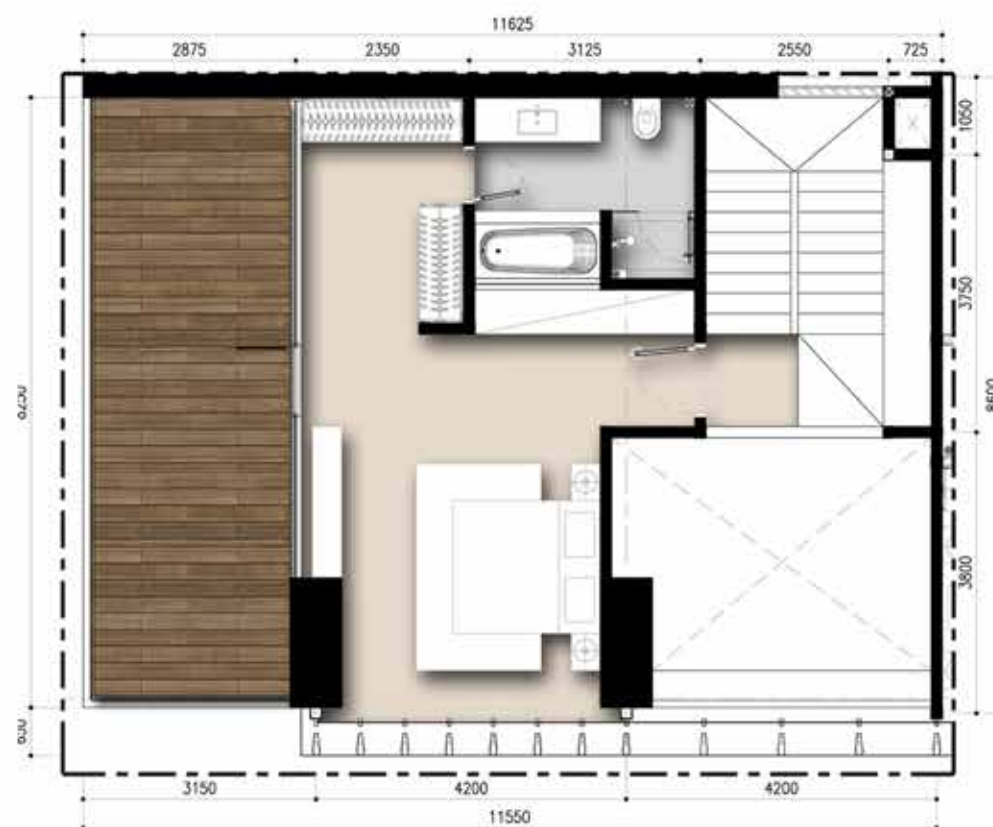
type
3BR B
161 m² semi gross



type
3BR LOFT A
192 m² semi gross



type
3BR LOFT B
209 m² semi gross



type

PENTHOUSE A

231.40 m² semi gross



type
PENTHOUSE B
261 m² semi gross





TECHNICAL SPECIFICATION



Brandt



FLOOR

Living Dining
Cutting slab of marble in polish finish

Bathroom Area
Cutting slab of marble in polish finish

Bedroom Area
Engineered Wood

Balcony
Homogenous Tiles

WALL

Living Dining
Smooth plaster with 1 base coat
and 2 layers finish coat

Bathroom Area
Cutting slab of marble in polish finish

Bedroom Area
Smooth plaster with 1 base coat
and 2 layers finish coat

Balcony
Smooth plaster with 1 base coat
and 2 layers finish coat

CEILING

Living Dining
Gypsum board ceiling in paint finish

Bathroom Area
Calcium silicate board ceiling in paint finish

Bedroom Area
Gypsum board ceiling in paint finish

Balcony
Calcium silicate board ceiling in paint finish

Bathroom
European brand sanitary wares and fittings

Ironmongeries
European brand lockcase

Kitchen
European brand kitchen appliances
Lower kitchen cabinet with natural stone top

Built-in Wardrobe for All Bedrooms

DISCLAIMER : While every reasonable care has been taken during preparation of this flyer, the developer and its agents cannot be held responsible for any inaccuracies. All statements are believed to be correct but are not to be regarded as statements of fact. All information and specifications are current at the time of print and are subject to changes as may be required and cannot form part of an offer or contract. All plans are subject to any amendments approved by relevant authority or other related parties. Rendering and illustrations are artist's impressions only and cannot be regarded as representation of fact. The size and dimension are approximate measurements using equipment, criteria and method determine by the developer.